



Parks and Recreation Department

Mt. Bonnell at Covert Park Improvements

Presented by:

Reynaldo Hernandez, RLA

Kim McKnight, MSHP



History of Mt. Bonnell at Covert Park

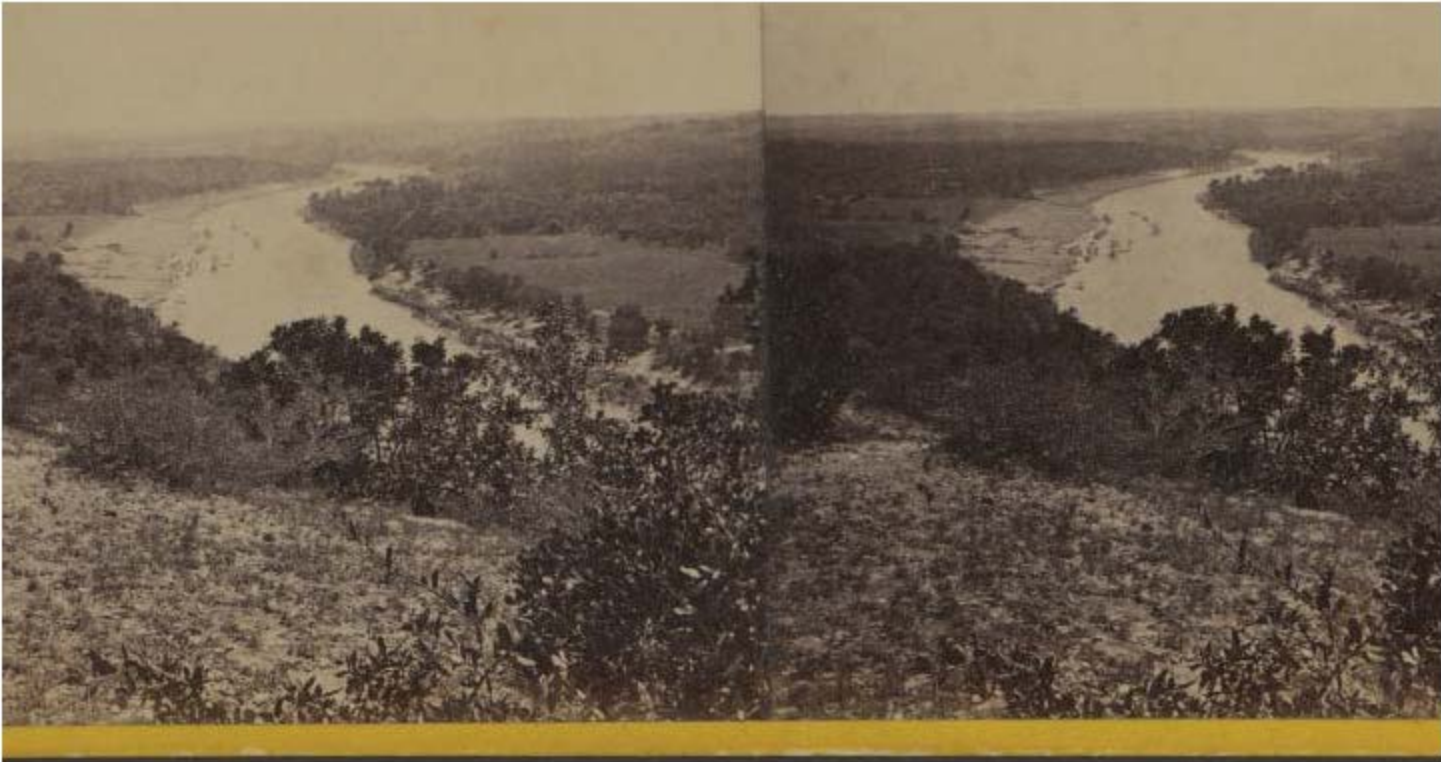


Fig. 2: ca. 1868; "View down the River from Mt. Bonnell 4 miles above Austin"; H. B. Hillyer, Photographer; Lawrence T. Jones III Texas photography collection; Southern Methodist University, Central University Libraries, DeGolyer Library

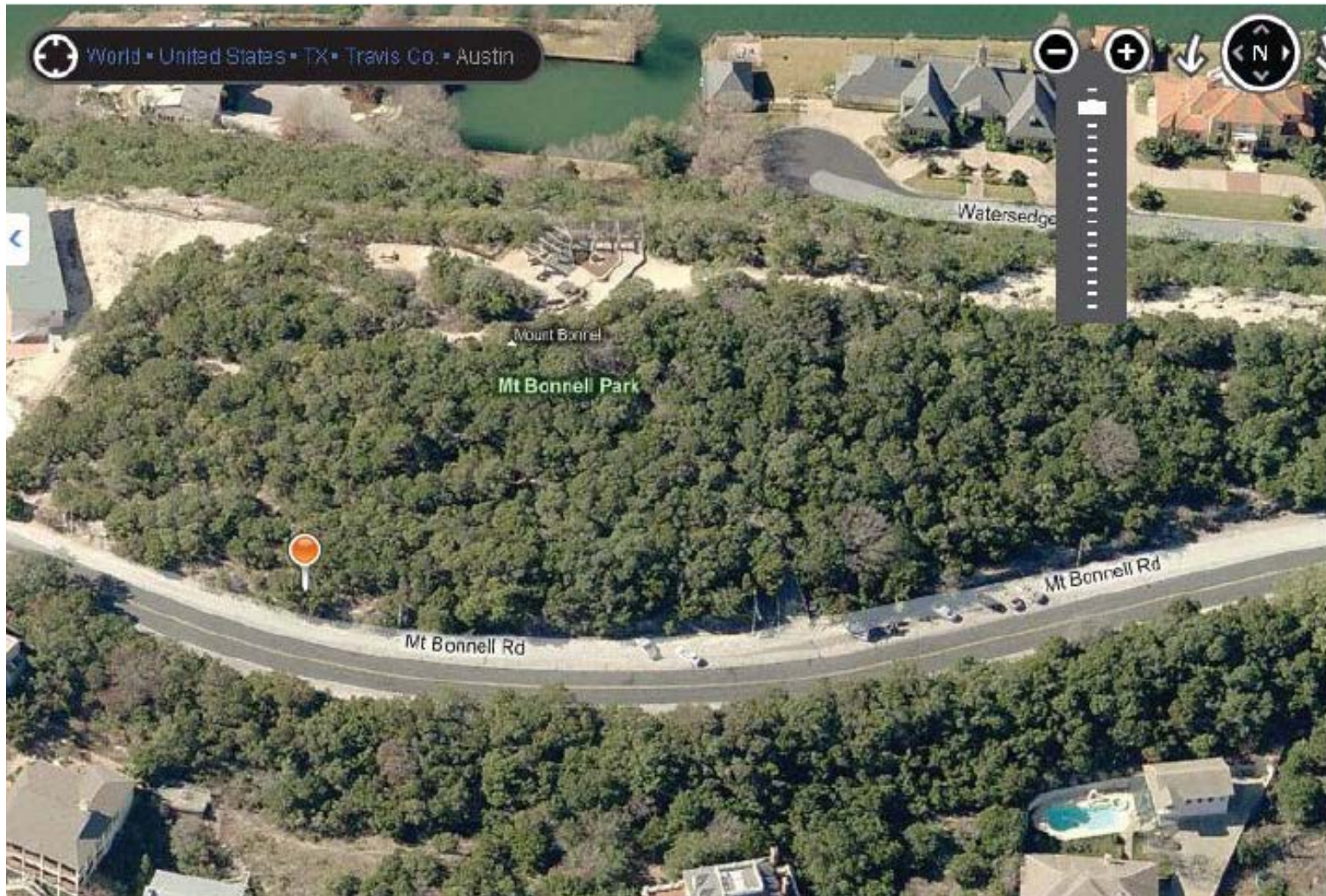
History of Mt. Bonnell at Covert Park



- Property donated to Travis County in 1938 by Covert Family
- Maintained by Travis County
- City of Austin Acquires property 1972
- Trellis and hardscape improvements installed 1983
- Designated as City of Austin Historic Landmark 1990
- West Point Society of Central Texas (WPSCT) adopts park 2010
- Presented to Certificate of Appropriateness Committee July, 2012



Aerial view of Mount Bonnell



Existing summit conditions



Perspective view existing conditions



Perspective view with proposed changes



Perspective view



Proposed plan view of improvements



Original monument and base



Existing monument



PARD Considerations



- The mission of the department is to “provide, protect and preserve” our park system. Mount Bonnell at Covert Park is one of 33 City of Austin Historic Landmarks entrusted to the Parks and Recreation Department.
- Per Memorandum of Agreement (MOU) between US Fish and Wildlife and the City of Austin, Covert Park is co-managed with the Balcones Canyon Land Preserve since 2004



PARD Considerations



- Mt. Bonnell at Covert Park is a designated City of Austin Historic Landmark and all changes are subject to review by the Historic Landmark Commission of the City of Austin.
- The Historic Landmark Commission makes determinations of appropriateness of changes using the Secretary of the Interior's Standards for Rehabilitation.
- The Austin Parks and Recreation Department adheres to all City of Austin policies and codes
- Officially presented to the Certificate of Appropriateness Committee July 2012



PARD Considerations



- The City of Austin Comprehensive Plan, *Imagine Austin*, states the following policies:
 - Land Use & Transportation/Historic Preservation Policies
 - LUT P38. Preserve and interpret historic resources (those objects, buildings, structures, sites, places, or districts with historic, cultural, or aesthetic significance) in Austin for residents and visitors.
 - LUT P44. Preserve and restore historic parks and recreational areas.



Next Steps



- Presentation of proposed improvements to Land, Facilities and Programs Committee for recommendations to Parks Board on March 18, 2013
- Presentation of recommendations from Land, Facilities and Programs Committee to Parks Board on March 26, 2013

